

# Parallel Gripper Tool

Product Flyer



This flexible servo-electric gripper tool with built-in force feedback picks up objects within a wide range of sizes, shapes and weights. It can be mounted on most robotics arms.

The gripper is rugged and can be used for different parts of your production process.

If the product does not match your specific requirement do not match your specific application please, contact us to discuss a customized tool.

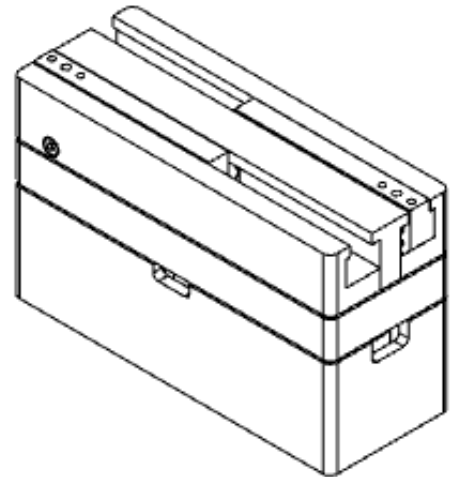
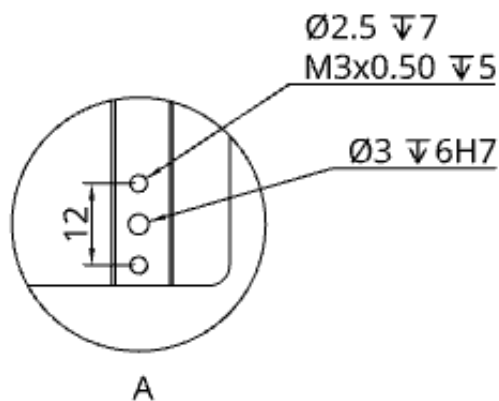
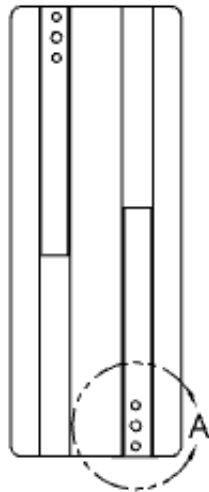
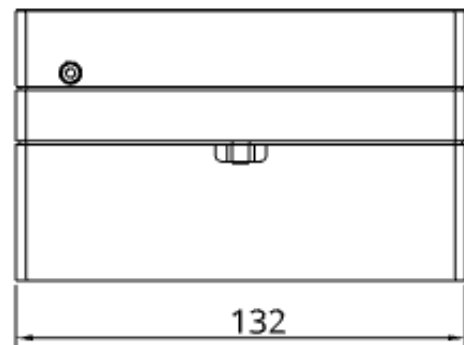
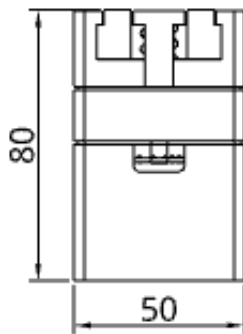
## Product specifications

General	Min.	Typ.	Max.	Units
Gripping force, max.	5		200	N
Gripping force resolution	1			N
Total stroke		118		mm
Relative finger speed	1		300	mm/s
Rel. finger speed increment		1	300	mm/s
Measured stroke resolution		0.01		mm
Measured stroke accuracy		± 0.05		mm
Dimensions (w/o fingers)		132 x 50 x 80		mm
Tool weight		950		g

Operating conditions	Min.	Typ.	Max.	Units
Power supply		24		V
Current consumption			2.7	A
Operating temperature	5		50	°C
Rel. hum. (non-condensing)	0		95	%

# Dimensions - tool

Product Flyer



## Example of fingers

Product Flyer

